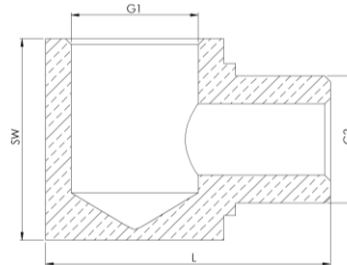


14.0950

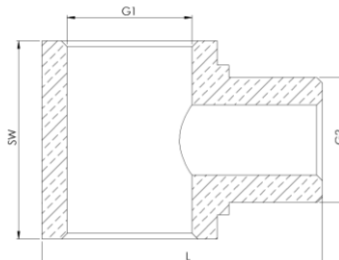


Male L-distributor

Art. No.	Type No.	Female thread	Male thread	a/f mm	L mm
		G1	G2		
112578	14.0950	M5	M5	9	13.0
112579	14.0951	G 1/8	G 1/8	17	23.0
112580	14.0952	G 1/4	G 1/4	22	29.0
112581	14.0953	G 3/8	G 3/8	27	32.0



14.0942



Male tee distributor

Art. No.	Type No.	Female thread	Male thread	a/f mm	L mm
		G1	G2		
112582	14.0940	M5	M5	10	14.0
112583	14.0941	G 1/8	G 1/8	17	23.0
112584	14.0942	G 1/4	G 1/4	22	29.0
112585	14.0943	G 3/8	G 3/8	27	32.0

P 6-383_e

Distributors, in block shape

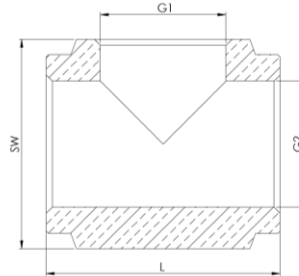
made of brass

Art. No. 112578 to 112581, Art. No. 112582 to 112585

Art. No. 112586 to 112588, Art. No. 112591 to 112593



16.0962

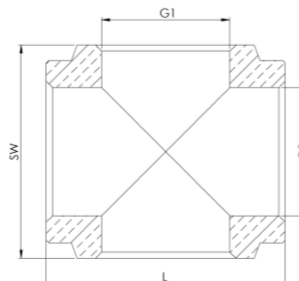


Tee distributor

Art. No.	Type No.	Female thread G1	Female thread G2	a/f mm	L mm
112586	16.0960	M5	M5	8	14.0
112587	16.0961	G 1/8	G 1/8	16	23.0
112588	16.0962	G 1/4	G 1/4	22	30.0



16.0972



X-distributor

Art. No.	Type No.	Female thread G1	Female thread G2	a/f mm	L mm
112591	16.0970	M5	M5	8	14.0
112592	16.0971	G 1/8	G 1/8	16	23.0
112593	16.0972	G 1/4	G 1/4	22	30.0